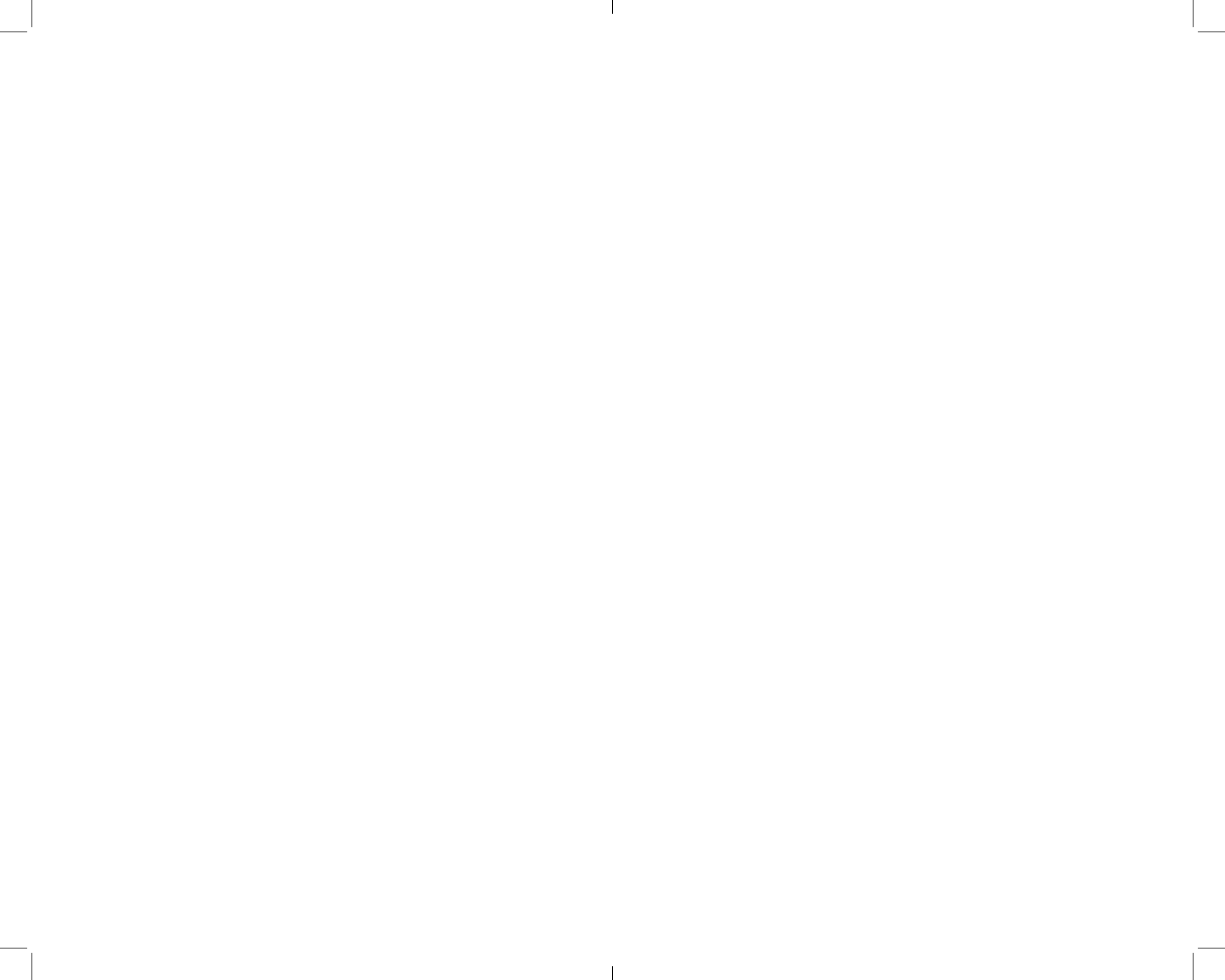


**ΠΩΣ ΝΑ
ΚΑΝΕΤΕ
ΕΙΚΑΣΙΕΣ
ΓΙΑ ΤΗ ΖΩΗ
ΜΙΑΣ
ΚΑΛΛΙΤΕΧΝΗ**

ΠΡΑΚΤΙΚΟ ΕΓΧΕΙΡΙΔΙΟ



Πώς να Κάνετε Εικασίες
για τη Ζωή Μιας Καλλιτέχνη

ΠΡΑΚΤΙΚΟ ΕΓΧΕΙΡΙΔΙΟ

Ναταλί Γιαξή



BEPA
BEPA
BEPA

*She is masterful, likes authority, aspires towards an ideal. She likes to give advice. She is honest, frank, loyal, open and sincere. Because her ego and her mind are aligned, she possesses much mental energy. She is always in a position to think about what she wants, and in many ways, this is an interruption of the will. She is highly intelligent with a great drive to communicate with others. **She invests a lot of pride in her intellectual capacities.** She may not always listen as well as she speaks, however! She might be too busy thinking about what to say next. But she is very curious and although she enjoys expressing herself, she usually does not dominate conversations completely. As far as studying or learning goes, she is better off reading the material than listening to a teacher. **Her opinions are usually strong and she is an independent thinker.** She tends to be proud of her opinions and thoughts, and might easily get a bruised ego if she is not heard, if her opinions are pushed aside or ignored, or if her opinions are criticized. She is expressive and possibly a very animated speaker. She is also very witty and others enjoy her playful and sometimes mischievous sense of humor. Social relationships are extremely important to her. She is generally charming with an easy-going manner. It is generally quite important to her that she is personally popular, to come across in a pleasant way, and to be liked and appreciated. She is diplomatic and a veritable expert at smoothing over (and sometimes glossing over) problems. She is openhanded with others, tolerant and accepting. **She has a fine eye for style and enjoy pleasing surroundings.** She generally dresses well and enjoys a certain amount of luxury. **Her identity rides on her sense of personal freedom.** It can be quite a challenge to get her to do what she doesn't want to do, simply because she sees any attempts by others to push her in a certain direction as threatening to her sense of freedom. She is a very dynamic person who questions tradition and authority, yet, paradoxically, she can be quite set in her ways. Although a humanitarian in many ways, she can be a little brusque when it comes to sentimentality or what she perceives to be excessive attachment to the past or to tradition. She can have a lot of nervous energy and defensiveness. It can be difficult to hold a 9 to 5 job or to develop steady routines. She works best when she can manage her own schedule, and work in spurts. **When she is hit with creative inspiration, she is capable of tremendous effort.** She doesn't like superficiality or pretense. **She should try her best to channel her high levels of intuition, inventiveness, and spiritedness into creative endeavors or important causes.** She might find that she encounters much less resistance in day-to-day life this way. **It is easy and natural for her to find a passion and pursue it, and to focus on a goal. She is not much scared of anything.** She enjoys and embraces growth, especially of the psychological kind. She loves a good mystery, and she is adept at solving it. She readily assigns meaning to what others might consider "ordinary" events. **She looks for symbols, and reads between the lines in almost any situation.** The physical vitality is generally strong, and the body is usually able to heal quickly. She is not afraid to get her hands dirty, and she is usually quick to help others- not only with mundane tasks, but also on a spiritual or psychological level. **Her insight is sharp and sometimes awe-inspiring. She is perceptive and not easily rattled or surprised in life. She is not afraid of the "dark side" of human nature.** She takes particular pleasure in growth and life's lessons. She is not fond of superficiality, and she is generally the first to spot pretense of any kind. She is passionate and can be intense. She has a hunger to experience more than just an "ordinary" life, and she can be quite ambi-*

tious. Some people with this aspect are perfectionists, demanding much from themselves and reasonable amounts of effort and honesty from others. More than anything, she needs personal freedom and space. Meeting new people, going out in the world, and travel are important to her sense of well-being. She loves open spaces, and, in her home, a roomy and bright environment. At the very least, she has a great love for friendly competition. When the going gets tough, she runs away. She doesn't like to be caught up in routine for too long, and she simply needs to escape. **She likes to throw herself into the unknown.** She is agile, tough and enthusiastic. She is attracted to long voyages and to the unknown and she takes great risks in throwing herself into the unknown and into adventure. **Audacious, bold and rebellious.** Unable to stay in one place, is always ready to risk everything to achieve her goal. She is generally pleasantly composed, due to an inner sense of harmony and emotional balance. She is optimistic -and realistically so, most of the time- which contributes to her overall luck. Quick to find humor in situations, she is generally warm and fun to be around. One of her best qualities is tolerance. Usually, she doesn't take life too seriously in the sense that she believes in having a bit of fun. Her hunches are more often than not spot-on. Her friendships are sincere. **She is a worker and knows how to surround herself with the right people: She is appreciated at work.** She is often plagued with doubts, not only about the self but also about what to expect from life itself. She likes to live in the world of imagination. Emotions are big, dark, and mysterious, but she embraces these things, instinctively understanding and accepting the many sides and complications of her feelings. She wants to know the bottom line, and is good at scoping out a situation and finding answers to problems. In fact, she is a problem-solver, and will spend a lot of time helping others solve problems if need be. Very friendly and usually positive, she can be charming in a warm way. Enthusiastic speaker, speaks with authority and sincerity. Great sense of organization. Playful. Likes to take risks in jest and for amusement. Might sometimes come across too strongly or offend sensitive folk with a somewhat authoritative tone. She likes to speak and write, and does both with charm and artistry. Her intellectual pleasures are influenced by her feelings. **She likes beauty, the Arts but also traveling. She is intelligent, has big ideas: she is tolerant and has a strong sense of justice. She has good judgment, good sense and has her feet on the ground.** She is erudite and will normally be successful socially. **She likes polemic, to criticize and, above all, to contradict.** She cannot stay in the same place, likes change even if it means a backward step in her professional career. She is warm, generous, and even grand. She has a successful married and professional life. Marriage is not for her and, if she does throw herself into this adventure, it will end in divorce, written off as a youthful mistake. Her strength lies in her tenaciousness. Her energy levels are variable, and they can appear to move rather slowly. **She has strength and resistance, ability and patience: she is tough, and puts all her energy and talents into overcoming all the obstacles to her success.** She is not particularly popular in her circle, but is feared and respected. **She is ambitious, has a great capacity for work, has self-confidence and goes to the end of her plans.** She attracts the most good fortune when she is open-handed and generous, tolerant, and practices what she preaches. Can be inspirational, and find success in travel, education, teaching, sports, publishing, and foreign cultures. Very philosophical, forward-looking, and enthusiastic. Has strong morals. Strongly values freedom of movement and expression. **She is a dreamer. She likes to live in solitude, in contemplation. Likes to work alone.**

*Αγαπητή Βέρα,
Πώς θα περιέγραφες την πρακτική σου αλλά και τη ζωή σου
ως καλλιτέχνη στην Κύπρο την εποχή που έζησες;*

36 - Thirty-Six
Darkening of the Light

Warmth and Light are swallowed by Deep Darkness. The Superior Person shows her brilliance by keeping it veiled among the masses. Stay true to your course, despite the visible obstacles ahead. This time calls for a saintly effort to turn the other cheek. You have been deliberately injured. Going blow-for-blow will only escalate this war. Abstain from vengeance. Show all watching that you are above it. Sidestep your aggressor's headlong charge, giving him the opportunity to fall on his face.

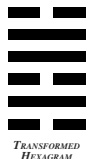


CAST HEXAGRAM

Changing Lines: 6th - The pheasant's wings falter and droop from exhaustion. The woman wanders three days without eating. She goes where she must, though scorn awaits her. 5th The grieving pheasant has a wounded left wing. The agent of darkness wounds the woman in her left thigh. Still the woman helps others to safety with the strength of a horse. 4th The wounded pheasant hesitates outside the grain-filled cage. The woman chases the agent of darkness back into the night, risking her own safety in the shadowy domain. 3rd The pheasant senses danger and flees the jaws of the trap. Descending into the belly of the beast, the woman beholds the true face of evil. In revulsion and despair, she flees what she knows she can never defeat. 2nd The wounded pheasant is captured. Despite its fright, this is a turn for the better. Its broken wing mended, the pheasant is released to its fate. Realizing that darkness co-exists with the light in her own heart, the woman transcends the bonds of good and evil, and freely roams the heights of Heaven and the bowels of Hell.

47 - Forty-Seven
Exhaustion

A Dead Sea, its Waters spent eons ago, more deadly than the desert surrounding it: The Superior Person will stake her life and fortune on what she deeply believes. Triumph belongs to those who endure. Trial and tribulation can hone exceptional character to a razor edge that slices skilfully through every challenge. Action prevails where words will fail. This is the realm of the Shaman. You have exhausted every alternative, spent yourself completely, taxed body and mind beyond your former limits. Survival and salvation lie beyond your reach now. Only transcendence to a new existence - a higher plane of being, will see you through. The Old You is just a dry husk. You can't return to it. Metamorphosis is the only grace offered. You can only return to your homeland as a New You.



TRANSFORMED
HEXAGRAM



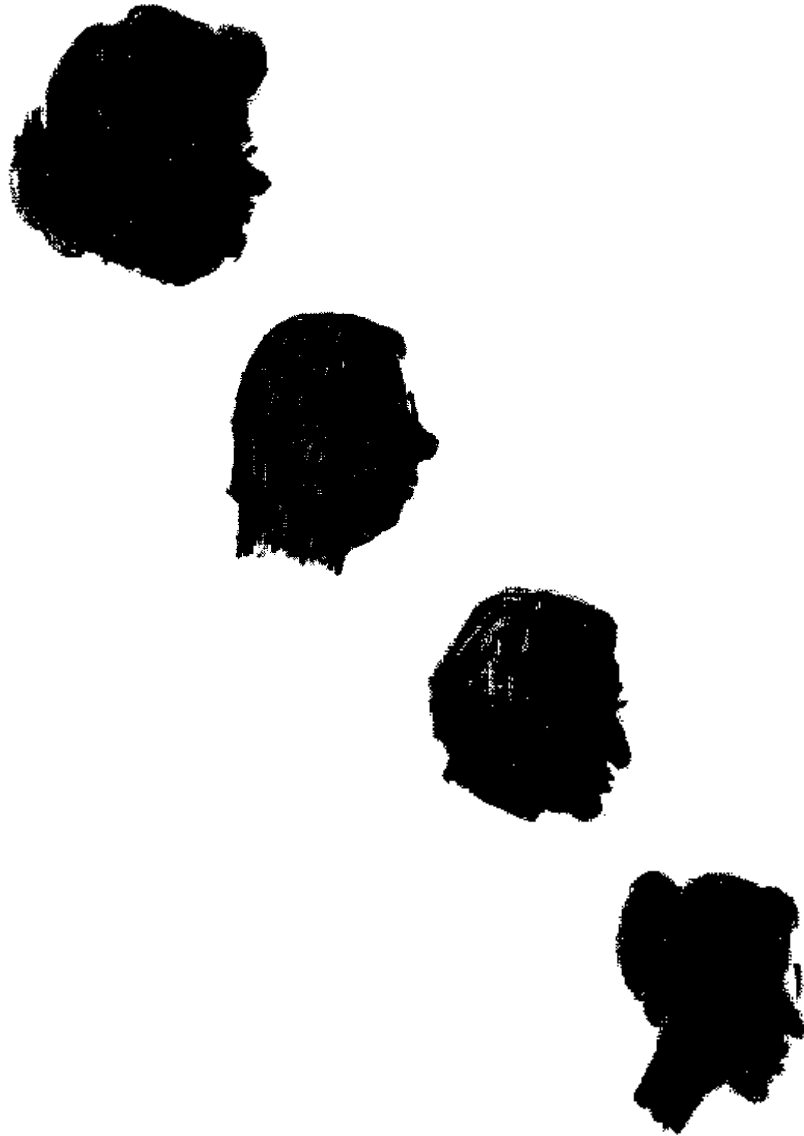
PASSION
TENACITY
AND
STRENGTH

ELENA

ELENA

ELENA

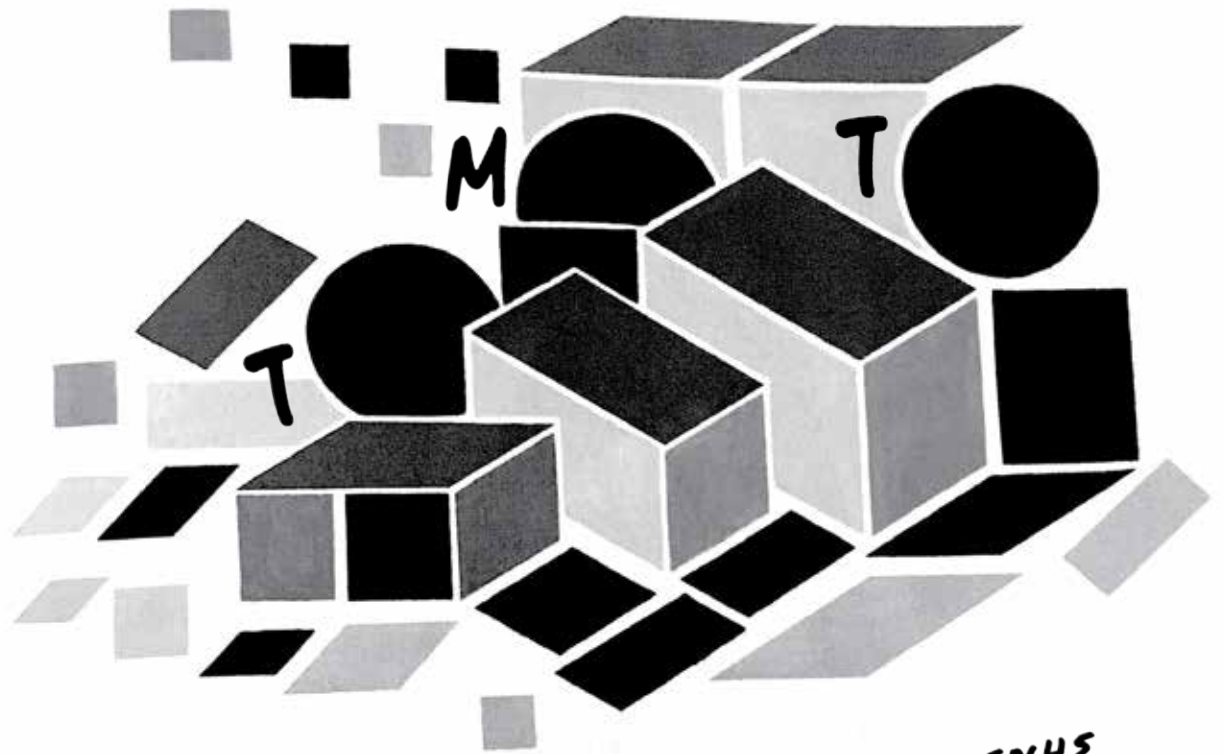
*She has vitality, a strong sense of individuality and an outward-shining creative energy. She is restless, cheerful, friendly, and on the go. She is quite easy-going, and makes friends with people from all walks of life. She loves to laugh and tease, and gets along well with both sexes. **She has a blind faith in people, and in the world.** Her optimism is infectious, it can get her into trouble from time to time. **She is a curious person who loves to learn. Her idealistic nature is hard to miss.** Her need for escape is generally strong. **Her direct, honest approach in life is admirable.** She is good, idealistic, enthusiastic and warm-hearted. She is independent, has a taste for travel and freedom. She is too adventurous, leaves things to chance and takes risks which cause problems. She is rebellious and sometimes tactless when offering opinions. **She is highly intelligent and invests a lot of pride in her intellectual capacities.** Because her ego and her mind are aligned, she possesses much mental energy. She is always in a position to think about what she wants, and in many ways, this is an interruption of the will. She is highly intelligent with a great drive to communicate. **She invests a lot of pride in her intellectual capacities.** She may not always listen as well as she speaks, however! She might be too busy thinking about what to say next. But she is very curious and although she enjoys expressing herself, she usually doesn't dominate conversations completely. **As far as studying or learning goes, she is better off reading the material than listening to a teacher.** These traits come from a strong need to take an active role in communications. It is very hard for her to passively listen and absorb information. **Her opinions are usually strong she is an independent thinker.** She is expressive and possibly a very animated speaker. **She is also very witty and others enjoy her playful and sometimes mischievous sense of humor.** It is generally quite important to her, to come across in a pleasant way. She has a fine eye for style and enjoys pleasing surroundings. She generally dresses well and enjoys a certain amount of luxury. It is easy and natural for her to accept responsibilities, to lead a rather ordered life, and to apply caution in her financial and business dealings. She rarely jumps to conclusions or takes uneducated risks. **She has a certain amount of patience and enough self-discipline to slowly but surely achieve what she sets out to do.** Although somewhat undemonstrative, she is generally loyal and responsible to those she cares about. **She takes her time in most endeavours and generally uses a step-by-step approach to most projects in order to steadily reach her goals.** She is naturally trustworthy, and she doesn't have much patience for those who don't show respect for others, who take foolish risks, and who lead disorganized lives. **She finds security in the little things in life. She feels most content when she has straightened out all the details of everyday life.** She enjoys running errands, paying bills, and balancing the books. She takes care of these things happily, although she won't let on. As long as she is appreciated, she will help you take care of your life, too. She is at her best when she feels useful and needed. If somebody needs help, she is generally the first to jump up and take on the task. **She is quite simply content with living a "regular", unassuming life. She appreciates simplicity, and is often most comfortable when she's not getting too much attention from the world at large.** She is easily overwhelmed by pressure and stress. She worries incessantly when there is too much to think about; and she knows her limits. Arguably the worst position for her, is to find herself without a steady routine or a simply satisfying job. **She needs something to call her own, and the space to do what she wants to do.** When she does not feel happy she freaks out if her plans are not followed: **the best remedy for her is a job in which she can express her deep***



need to analyse and attend to details. She expresses her affection for the people she cares about in little, but practical, ways. She is often shy with new people. However, when she is comfortable, she is anything but shy. She is reliable, trustworthy and above all else, practical. Others turn to them for help and advice. **She is very body-aware and too aware of the parts that make the whole.** She is very skeptical and she can't help but poke holes when faced with others' blind faith. Her criticism can be maddening, and her insistence on seeing the practical in anything emotional can be challenging. Her advice can seem hard to more sensitive folk, yet she can be surprisingly delicate when faced with others' criticism. She is generally busy and quietly happy when she has her life under control. **She aims for a simple existence, and she is quite content with very little.** She is probably an early riser, ready to take on the day with enthusiasm. As long as her world is manageable, she can be a delight to be around. She has a very good memory. She is humble and moderate, calm and reserved. She has emotional discipline. She is irritable and stubborn at times due to an inner restlessness that is hard to satisfy. She wavers between a rich and successful domestic life and social success. She has difficulty in succeeding in both. **Very perceptive and given to psychoanalyzing people.** A strategist. Powerful emotions and intense feelings. Emotions are big, dark, and mysterious, but she embraces these things, instinctively understanding and accepting the many sides and complications of her feelings. **She is extremely observant and astute, always reading between the lines and looking for the real meaning behind things.** Passionate in speech, excellent at strategy. **Natural psychologist.** She looks on the bright side of life: she is gay, agreeable, optimistic, sociable. She likes to speak and write, and does both with charm and artistry. Her intellectual pleasures are influenced by her feelings. She is amorous and sensual. She likes beauty, the Arts but also traveling. She is or strives to be mentally organized. She is able to study, concentrate, and focus, and often has the patience to work towards a goal slowly but surely. **She is perceptive, ingenious: she binds intelligence and originality together with genius. She likes literature, especially fiction.** She has a good grasp of reality and of duty. She is thrifty, reserved and does not show off. She likes truth and justice. In love, her sentiments are sincere and deep, she never plays false. She is, of course, faithful in love and friendship. She can love a much older person who appreciates her intelligence and good sense. "Slow and steady wins the race" could easily be her motto for she is goal-oriented and goal-oriented people are not known for their speed! Her staying power is tremendous. She is generally calm and easy-going but she can have powerful tempers when she is overly provoked. She values strength and stability. **She is not afraid to work for what she wants, even if it takes a few years to achieve her goals. She is not the type of person to take on too many projects at once.** Adaptability is not her strong point. She attracts the most good fortune when she is tolerant and fair, inventive, impartial, and cooperative. Values people and personal freedom most. Wants to show unique perspective or skills. Open to new methods and progress. Great tolerance and humanitarianism. She is a dreamer, who lets herself be seduced by fine words, which are not always sincere. **She is observant, self-controlled, unforgiving, tough, methodical, a researcher, an investigator. She has lots of courage, self-assurance and can keep her cool. She makes no concessions or compromises. She knows how to be on top of the situation. She perseveres, is determined, ingenious and original.** She is very practical. She is receptive, subtle but reveals herself when asked to become involved. She cannot live a peaceful love life. She will have lots of adventures, lots of love-at-first-sights which may lead her into a dangerous territory, which can complicate her life.

ΖΗΣΕ

ΚΡΥΦΑ

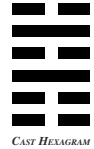


ΤΗΣ ΕΛΕΝΗΣ

Αγαπητή Ελένη,
Γιατί επέλεξες να μη δείξεις ποτέ τη δουλειά σου σε ατομική
έκθεση;

39 - Thirty-Nine
Obstacle

Ominous roiling in the Crater Lake atop the Volcano. When meeting an impasse, the Superior Person turns her gaze within, and views the obstacle from a new perspective. Offer your opponent nothing to resist. The Obstacle lies in obstinance. An insistence on only one way of proceeding has brought things to an impasse. You may either continue banging your head with irresistible force against this immovable object, or you might step back and survey this situation from a fresh perspective. Which is immobile here - the obstruction or your attitude?

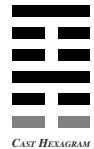


CAST HEXAGRAM

Ελένη, τότε λοιπόν, πιο ήταν το πραγματικό εμπόδιο;

52- Fifty-Two
The Mountain

Above this Mountain's summit another more majestic rises. The Superior Person is mindful to keep her thoughts in the here and now. Stilling the sensations of the Ego, she roams her courtyard without moving a muscle, unencumbered by the fears and desires of her fellows. This is no mistake. There is a higher vantage point available to you, but it is obscured by the visible peak of personal ambition. To climb to this higher plane, you must shake off the desires and fears of the conscious, visible world around you. To make this journey you must quiet the Ego, empty your mind of past and future, and dwell totally in the moment at hand. Thorough mindfulness of what is before you is the only tranquility. Be. Here. Now.

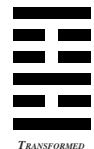


CAST HEXAGRAM

-
Changing Lines: 1st Not even moving a toe. No mistakes. Hold to this course.
-

22 - Twenty-Two
Grace

Fire illuminates the base of the Mountain. The Superior Person realizes she has not the wisdom to move the course of the world, except by attending to each day's affairs as they come. The emphasis now is on form, not function. The environment around you is not one of depth, and you are appreciated now for your image, not your essence. You perfectly fill a role, and no one is seeing the genuine you. Still, you are being listened to and watched. Use this influence to further your goals as much as possible. Even if you don't feel understood, you can perhaps connect with a few isolated hearts.



TRANSFORMED
HEXAGRAM

KAITH

KAITH

KAITH

MONDAY, 21ST OF SEPTEMBER, 1925
LIMASSOL

mp

-Έχεις προτίμηση
σε μερικά χρώματα;

She is analytical, intelligent, reserved, critical, helpful and conscientious. She is resourceful and has powerful stores of energy she can draw upon when needed. She responds to problems or challenges with a spirited and enthusiastic confidence that is admirable. She is respectable, hard-working and loves knowledge and all that is “natural”. She has a certain purity of spirit that keeps her self-sufficient and self-contained. She is sensitive to her surroundings, and she tends to embarrass easily. She is reserved when faced with anything or anyone new. However, once she feels comfortable, she can talk up a storm. She is not too comfortable in the limelight. She has a strong sense of responsibility. Even when she has convinced herself to be irresponsible about something or the other she still worries about it. She is naturally competitive, and this trait is generally well-received by others simply because it is unforced, unaffected, and sincere. She truly believes in fair play, and she seems to be in love with life. When she is expressing competitiveness and courage, it’s easy for others to smile and accept these traits as positive ones rather than being rubbed the wrong way. She has good physical vitality. Although competitive, she is not naturally combative. Breaking the rules of a competitive game is particularly upsetting to her. She is more able than most to control her desires, aggressions, and instincts. She knows how to be fair, and she expects others to be fair. As such, sneaky behaviors, uncontrolled impulses, violence, and rage are offensive to her. While others may find security and comfort in material things, she seeks out emotional intensity. She can see beyond facades and cut right to the core of a person. This ability to “see” what isn’t obvious to the rest of the world can be intimidating to others or wildly attractive, depending on the audience. Doing things halfway or having meaningless relationships simply doesn’t fulfill her. She wants all or nothing. She radiates strength. Even in the absence of experience, she seems to “just know” things. It would be difficult to shock or scare her away in the face of emotional honesty and power. Some people instinctively want to lean on her. She has an exceptional “radar” that allows her to size up a situation-and a person, quickly and expertly. This ability to understand human motivation and nature can be too close for comfort for some, and enormously comforting for others. She is courageous, brave, independent and progressive woman. She may have a difficulty letting go. She is generally amiable and projects a soft and yielding manner. She possesses natural charm and she is highly imaginative and sympathetic. She can make an excellent mediator and go-between. She has a well-developed respect for qualities typically associated with the feminine. People appreciate her for her tender heart and friendly, diplomatic disposition. She should enjoy a good measure of personal popularity and success in her life. Although generally considered “lucky” with relationships and with money, this is less about luck than it is about a certain level of inner peace and positive energy that attracts pleasant situations. At times she can be complacent, downright lazy, and over-indulgent in the pleasures of life. She is a peace-maker at heart and has an unusual ability to help and heal others. She is gracious and warm. She controls her feelings. She has a sense of duty, of self-esteem and is prudent. She can concentrate on a long-term task, manual or intellectual. She perseveres and is serious in everything she does. She discusses, deduces and judges. She reasons logically and accurately. She spends a lot of time on practical matters and keeping things in order. Sometimes nitpicky and nervous, secretly feeling she handles matters better than others. She is intelligent, has big ideas: she is tolerant and has

- Όχι. Όλα έχουν την ομορφιά τους και τα χρησιμοποιώ όλα. Η προσπάθεια είναι να εξευρεθούν οι σχέσεις τους.

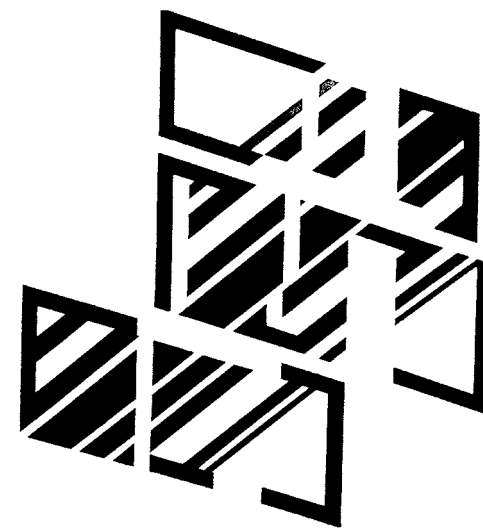
*a strong sense of justice. She has good judgement, good sense and has her feet on the ground. She is cultivated and will normally be successful socially. She is or strives to be mentally organized. She is able to study, concentrate, and focus, and often has the patience to work towards a goal slowly but surely. She takes time to get communications “just so” and tends to prefer step by step directions. Respects tradition and rules. **She likes polemic, to criticize and, above all, to contradict. She cannot stay in the same place, likes change even if it means a backward step in her professional career.** She has a great sense of observation and quickly grasps the situation. She has a good grasp of reality and of duty. She is reserved and does not show off. She likes truth and justice. In love, her sentiments are sincere and deep, she never plays false. She is faithful in love and friendship. She can love a much older person who appreciates her intelligence and good sense. **She is productive, practical and goal-oriented.** Although she can be a little scattered at times, simply because she is doing so many things at any given time, she gets things done quite well. She can handle a wide variety of tasks at once, and has a tendency to take on perhaps too much at the same time. Her identity rides on her sense of personal freedom. It can be quite a challenge to get her to do what she doesn't want to do, simply because she sees any attempts by others to push her in a certain direction as threatening to her sense of freedom. She is a very dynamic person who questions tradition and authority, yet, paradoxically, she can be quite set in her ways. It can be difficult to hold a 9 to 5 job or to develop steady routines. She works best when she can manage her own schedule, and she works in spurts. Although she can be a little hard-nosed and critical at times, she rarely resorts to pushing others around. **Although rather humble in a general life sense, she can be quite particular about her methods-how she organizes and accomplishes her goals, mostly with work. She derives plenty of energy and life force from the things she does- her work, and any kind of projects she takes on.** She is a perfectionist and she worries when she is not producing anything, but she also worries about whether what she has produced will measure up. **She is original, tending to the eccentric.** She fights to the bitter end to overcome hurdles, and has the strength to overcome them. She attracts the most good fortune when she organizes and directs, conducts herself with integrity, is ethical, and mature. Values the long term, achievement, responsibility, and manifestation. **Succeeds through resourcefulness and avoiding activities that waste time, energy, or resources. Good at streamlining. Position or status is important to her. She is serious, patient, honest, hard-working, orderly. Her judgment is good and she thinks things over.** She pursues her objectives usually knowing when to choose the right moment. She is upright and respects the law. She is rarely satisfied with her achievements unless they are big. She is observant, self-controlled, unforgiving, tough, methodical, a researcher, an investigator. She has lots of courage, self-assurance and can keep her cool. **She makes no concessions or compromises. She perseveres, and achieves her projects through hard work.** She is receptive, subtle but reveals herself when asked to become involved. Her generosity is shown by her charity and forgiveness. She is sociable. She is very loyal. When she is not involved in some kind of project, there is generally a vague feeling of discontent. Even when her life is filled up with work, she is restless since the fear of under-performing is often strong. She wants to do things well. **Her intuition is enormous.***

ΕΚΟΒΑ ΚΟΜΜΑΤΙΑ ΑΠΟ ΧΡΩΜΑΤΙΣΤΑ ΧΑΡΤΙΑ

ΤΟΥΣ ΕΔΙΝΑ ΤΗ ΦΟΡΜΑ ΠΟΥ ΗΘΕΛΑ ΚΑΙ



ΠΟΛΥ



ΚΑΤΟΙΚΙΕΣ

ΥΣΤΕΡΑ ΤΑ ΚΑΡΦΙΤΣΩΝΑ ΣΕ ΚΟΜΜΑΤΙΑ

ΠΟΛΥΣΤΕΡΙΝΗΣ ΚΑΝΟΝΤΑΣ ΣΥΝΘΕΣΕΙΣ

ΑΕΙΘΑΛΗΣ

ΖΩΓΡΑΦΟΣ

Αγαπητή Καίτη,
Υπάρχει κάτι για το έργο σου στο σύνολό του, που ακόμη δεν
έχει ειπωθεί;

1 - One Creative Power

Heaven above and Heaven below. Heaven in constant motion. With the strength of the dragon, the Superior Person mentally prepares herself for ceaseless activity. Productive Activity. Potent Influence. Sublime Success if you keep to your course. The time for action has come. You now have the focus and the stamina necessary for accomplishing great tasks. The path before you is being cleared and reward lies ahead.



CAST HEXAGRAM

Καταλαβαίνω τι θες να πεις, γι' αυτό αντί να μείνω στην καθοδήγηση που παρέχει το εξάγραμμα, ανατρέχω στην σημασία του στο Βιβλίο των Αλλαγών:

The first hexagram is made up of six unbroken lines. These unbroken lines stand for the primal power, which is light-giving, active, strong, and of the spirit. The hexagram is consistently strong in character, and since it is without weakness, its essence is power or energy. Its image is heaven. Its energy is represented as unrestricted by any fixed conditions in space and is therefore conceived of as motion. Time is regarded as the basis of this motion. Thus the hexagram includes also the power of time and the power of persisting in time, that is, duration. The power represented by the hexagram is to be interpreted in a dual sense—in terms of its action on the universe and of its action on the world of men. In relation to the universe, the hexagram expresses the strong, creative action of the Deity. In relation to the human world, it denotes the creative action of the holy woman or sage, of the ruler or leader of women and men, who through her power awakens and develops their higher nature.

ΠΑΥΛΙΝΑ

ΠΑΥΛΙΝΑ

ΠΑΥΛΙΝΑ

*She has physical energy and courage, strong passions and strong sexual powers. **She has the ability for constant regeneration and improvement.** She is confrontational. She has an internal struggle between her needs and her wants. She can lack focus and be indecisive as a result. Her ability to be objective is both an asset and a liability, simply because when she decides on one route, she is pulled in another direction at the same time. Something tugs at her, and she begins to question her stance. “But what if...” and “on the other hand...” are statements she can’t help but make, and that might plague her. She is always aware of the opposing point of view and the other side of the coin. **It is natural for her to question tradition.** She is, above all things, an individualist. **She naturally rebels against that which is established.** It doesn’t mean that she consistently breaks all the rules, but she definitely does question some of the rules, especially those that simply don’t make much sense. **She possesses a huge distaste for routine.** **She works best when she has some say as to when and how she gets things done.** **She possesses much self-integrity.** **She avoids labeling people and she is most offended when others attempt to label or stereotype her.** **She easily embraces new ways of doing things, she sticks up for the underdog, and she expresses herself in unique and inspiring ways.** **She doesn’t have to try to stand out as unique, she is original, creative, and progressive without trying.** **She is far from pretentious.** She values honesty and truth. **She believes in the equality of people, and easily relates to people from all walks of life.** She possesses an unmistakable enthusiasm about life, and generally her life is interesting because she invites unusual or adventurous experiences into her life. She is generally appreciated by others because she is open-minded, fair, and not judgmental. She takes things in stride, and is rarely shocked or taken aback by human behavior. **She has a desire to be something special or to experience something more than the ordinary.** **She is a day-dreamer and an idealist.** It is easy for her to trust others, even (and perhaps especially) people who might seem from the outside looking in as unsavory types. She is looking to identify with something beyond what is normally expected of people. She may have had a childhood that didn’t help her direct or define her life. Perhaps the early family life was lacking in supervision or clearly defined rules. A father figure may have been absent or distant and ineffective. She may have a glorified image of her father. Whether the image is very positive or very negative (or if it swings between these extremes), the image is not very clear or rational. Whatever the case may be, she struggles with defining who she is. She may be easily led astray by peculiar desires. In order to add a greater-than-ordinary dimension of experience to her life that helps her to feel special and important, she might be attracted escapist behaviors. In some way, she may feel a strong urge to glamorize her role in the world. Familiarity is important to her. She feels with her senses and she is pretty much rooted in her ways. She enjoys material comforts. It isn’t wise to try to push her into doing anything, but once she has made a commitment, she is persevering. She tends to go out of her way to avoid “messy” or unpredictable situations, crises, and emotional displays. However she is very romantic, sentimental and warm. She has an ability to protect herself and her own interests. She will rarely make a move without first determining that it is safe and that there’s something in it for her. She has reliable instincts. She is very much tied to the physical world, and she may have a particularly well-developed sense of smell. There is a serenity to her that is calming. In fact, it takes a lot to really get to her. However, she does get off-center every once in a while. Her needs are strong but quite simple at the same time. The world of the five senses is all-important to her. **She is convinced of her ideas. She is strong-***

THE FIGURES OFTEN HAVE ONE LEG OR ARM
BUT LOOK NATURAL NEVERTHELESS

MY SCULPTURES BALANCE ON THEIR OWN
AND DO NOT NEED TO STAND

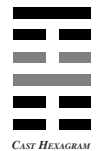
I OFTEN WORK WITH MUSIC, MY FAVOURITE ARE BACH
AND MOZART, AND MANY PEOPLE ASK ME WHETHER I WAS EVER A DANCER

*willed. She is foresighted and wilful. She knows how to trust. She appreciates all the good things in life. She appreciates and protects Nature. There is a conflict here between the head and the heart. Her emotions tell her one thing and her mind tells her something else. The result is a see-saw effect: she can be emotional at one moment, and logical the next. How to blend the head and the heart is a constant struggle for her. She loves to chat, enjoys story-telling and writing/poetry, and sometimes enjoys bending the truth. she possesses a sparkling wit. **She is animated when she speaks, and has a sense of humor that others appreciate simply because it's very imaginative. She may be especially adept at satire.** People can usually read her mood by how much she is talking. When nervous or excitable, she talks up a storm. Moodiness is a characteristic, definitely, and an especially subjective nature makes her prone to hypersensitivity. It usually has to do with the fact that she takes in so very much from her environment. This is also one of the reasons why she tends to be indecisive. **She is always interesting, and usually funny. She has a tendency to misrepresent herself with what she says from time to time, but she is charming. She likes to live in a dream, in the world of imagination. She is extremely observant and astute, always reading between the lines and looking for the real meaning behind things.** Passionate in speech, excellent at strategy. Natural psychologist. She sometimes makes errors of judgement. She lets things happen, and is happy in her dreamworld. Confronted by reality, she is hesitant, incapable of being tested and falls back into her imaginary world. Mild-tempered and gentle, she moves through life in a manner that can hardly be considered direct. Sometimes prone to feelings of guilt about her anger, and difficulties with asserting she seems to "go with the flow". So, she might let life "happen" instead of trying to control her life direction. This is a charming position, however if she doesn't find creative expression, this energy can stir up a storm through indirect aggression. Energy levels fluctuate a lot, coming in bursts of activity followed by inertia. Because it can be difficult to align this ebbing and flowing of energy in the day-to-day world as it is, finding a job that supports this may be tough. **She is happiest when she has a creative outlet that allows her to express her desires of the moment, her compassion-and even her anger- freely and imaginatively.** She is energetic and determined. She has strength and resistance, ability and patience: she is tough, and sometimes insensitive, and puts all her energy and talents into overcoming all the obstacles to her success. She is obstinate and does not take on anything without having thought of all the possible consequences. She can take all the time in the world and never loses patience to achieve her objectives. She is not particularly popular in her circle, but is feared and respected. She possesses exceptional energy. **She is impulsive and bold. She takes on risky enterprises for the good of the community, with all the energy she possesses.** She has a great need of her independence, likes her freedom of action. **She is ambitious, has a great capacity for work, has self-confidence and goes to the end of her plans.** She attracts the most good fortune when she is open-handed and generous, tolerant, and practices what she preaches. Can be inspirational, and find success in travel, education, teaching, sports, publishing, and foreign cultures. **Very philosophical, forward-looking, and enthusiastic.** Has strong morals. Strongly values freedom of movement and expression. She is too independent and her liberty is all-important. **She lacks diplomacy, and her extravagance is shocking.** She likes verbal battles and espouses extremist ideas in order to shock her companions. She has a number of internal tensions. **She is very generous and altruistic, helping people in difficulty or sick people.** She knows how to listen or, at least, how to give that impression. **She is a dreamer, with lots of imagination: she likes the Arts.** She will be very disappointed in love. Her generosity is shown by her charity and forgiveness. She is sociable. Love dominates her life. She lives her love life to the full, and is passionate.*

Αγαπητή Παυλίνα,
Θα ήθελα πολύ να μάθω: τι σε ώθησε να φύγεις από την
Κύπρο;

18- Eighteen
Repairing the Damage

Winds sweep through the Mountain valley. The Superior Person sweeps away corruption and stagnation by stirring up the people and strengthening their spirit. Supreme success. Before crossing to the far shore, consider the move for three days. After crossing, devote three days of hard labor to damage control. You are blessed with an opportunity to resuscitate that which others have abandoned as beyond repair. This ruin wasn't caused by evil intention, but by indifference to decay. Just by addressing yourself to the problem, you exhibit a new awareness, a fresh perspective. This is a time of recovery, renewal, regeneration.

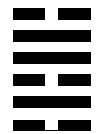


CAST HEXAGRAM

-
Changing Lines : 3rd - Restoring what her father damaged. Some regrets, but no great mistakes. 4th - Tolerating the malpractices of the father will lead the daughter to ruin.
-

64 - Sixty-Four
The End in Sight

Fire ascends above the Water: The Superior Person examines the nature of things and keeps each in its proper place. Too anxious the young fox gets her tail wet, just as she completes her crossing. To attain success, be like the woman and not like the fox. Resist the rush to completion. Anticipation of fulfillment may call you before you have fully absorbed the lessons of the journey. The endpoint of this Quest will only prove to be the threshold for another. You are short steps from Mastery on this plane, yet you stride toward Ignorance of the challenges lying beyond. Savor this accomplishment. Fully Become. Take full possession of your world before embarking to discover the next one. That voyage begins soon enough, and you will reminisce about this one. These are the Good Old Days.



TRANSFORMED
HEXAGRAM



Αναφορές και Σημειώσεις με Σειρά Εμφάνισης

Βέρα Βέρα Βέρα Γαβριηλίδου Χατζηδά

Αποσπάσματα από επεξεργασμένα κείμενα από αστρολογικό προφίλ της Β.Γ.Χ που δημιουργήθηκε χρησιμοποιώντας διαδυκτιακές πύλες αστρολογικής «ψυχαγωγίας».

Υπερβατική Συνέντευξη με τη χρήση του Βιβλίου των Αλλαγών και της ιστοσελίδας iching online.

Ψηφιακή απόδοση του πίνακα 4 Α της Β.Γ.Χ.

Τίτλος σε άρθρο του Glynn Hughes στην Cyprus Weekly για την Β.Γ.Χ, 20 Φεβρουαρίου, 1997.

Ελένη Ελένη Ελένη Χαρικλείδου

Αποσπάσματα από επεξεργασμένα κείμενα από αστρολογικό προφίλ της Ε.Χ που δημιουργήθηκε χρησιμοποιώντας διαδυκτιακές πύλες αστρολογικής «ψυχαγωγίας».

Ψηφιογραφίες σκίτσων της Ε.Χ. που απεικονίζουν καρικατούρες συναδέλφων, από το βιβλίο *Ελένη Χαρικλείδου* (2011) των Ελένη Κάνθου και Ελένη Σ. Νικήτα, έκδοση του Ιδρύματος Τηλέμαχου Κάνθου. Πάνω προς τα κάτω, απεικονίζονται οι: Καλομοίρα Σαββίδου, Καλλιόπη Καραγιώργη, Ζωή Χαρικλείδου και Ουρανία Κοκκίνου.

Το μότο της Ε.Χ με φόντο ψηφιογραφία του έργου της [Σύνθεση Με Σπίτια και Δέντρα (Λάδι σε καμβά 63, 5Χ 77εκ)]. Πηγή έργου: η έκδοση του ιδρύματος Τηλέμαχος Κάνθος με τίτλο *Ελένη Χαρικλείδου* (2011), της Ελένης Κάνθου και της Ελένης Σ. Νικήτα. Παρέμβαση στο έργο με τα γράμματα T M T. Σημ: Ζήσε Κρυφά: μετάφραση του *Λάθε Βιώσας* του Επίκουρου, φράση που σε ελεύθερη απόδοση σημαίνει ζήσε στην αφάνεια, μην επιδιώκεις τη δόξα ή την (πολιτική) εξουσία.

Υπερβατική Συνέντευξη με τη χρήση του Βιβλίου των Αλλαγών και της ιστοσελίδας iching online.

Καίτη Καίτη Καίτη Στεφανίδου

Απόσπασματα από επεξεργασμένα κείμενα από αστρολογικό προφίλ της Κ.Σ. που δημιουργήθηκε χρησιμοποιώντας διαδυκτιακές πύλες αστρολογικής «ψυχαγωγίας», συνοδευόμενα από αποσπάσματα συνέντευξής της.

Αποσπάσματα από περιγραφή της Κ.Σ. για τη διαδικασία που ακολούθησε για τη δημιουργία της σειρά αφηρημένων γεωμετρικών έργων που απεικονίζονται στο φόντο σε μαυροάσπρη εκτύπωση. Πάνω αριστερά: Χωρίς τίτλο (Αφηρημένο γεωμετρικό), 1972, ακρυλικό σε καμβά 120x127εκ. Κάτω αριστερά: Χωρίς τίτλο (Αφηρημένο γεωμετρικό), 1972, ακρυλικό σε καμβά 150x150εκ. Δεξιά: Χωρίς τίτλο (Αφηρημένο γεωμετρικό), 1971, ακρυλικό σε καμβά 85x80εκ.

Υπερβατική Συνέντευξη με τη χρήση του Βιβλίου των Αλλαγών και της ιστοσελίδας iching online. *Αειθαλής Ζωγράφος: τίτλος της Μαρίνας Σχίζα σε άρθρο για την Κ.Σ στον Φιλελεύθερο*

Παυλίνα Παυλίνα Παυλίνα Παυλίδου

Απόσπασματα από επεξεργασμένα κείμενα από αστρολογικό προφίλ της Π.Π. που δημιουργήθηκε χρησιμοποιώντας διαδυκτιακές πύλες αστρολογικής «ψυχαγωγίας». συνοδευόμενα από αποσπάσματα συνέντευξής της.

Υπερβατική Συνέντευξη με τη χρήση του Βιβλίου των Αλλαγών και της ιστοσελίδας iching online.

Κολάζ με απεικονίσεις γλυπτών της Π.Π από το αρχείο Κρατικής Πινακοθήκης (λεζάντες, μη διαθέσιμες).

Πώς Να Κάνετε Εικασίες Για τη Ζωή
Μιας Καλλιτέχνη: Πρακτικό Εγχειρίδιο

© 2019 Ναταλί Γιαξή
©ΓΚΑΡΑΖ publications

Η παρούσα έκδοση αποτελεί ανάθεση του Πολιτιστικού Ιδρύματος Λευτέρη Οικονόμου στην Ναταλί Γιαξή, με αφορμή την έκθεση ορατότητες/ απηχήσεις/, με έργα των Παυλίνα Παυλίδου, Καίτη Στεφανίδου, Ελένη Χαρυκλείδου και Βέρα Γαβριηλίδου-Χατζηδά, στον εκθεσιακό χώρο ΓΚΑΡΑΖ από 16 Μαρτίου μέχρι 20 Απριλίου 2018.

Διοργάνωση έκθεσης: Πολιτιστικό Ίδρυμα Λευτέρη Οικονόμου με την υποστήριξη των Πολιτιστικών Υπηρεσιών
Επιμέλεια: Δήμητρα Ιγνατίου
Βοηθός επιμέλειας: Άννα Μαρία Χαραλάμπους
Concept, υλοποίηση και σχεδιασμός έκδοσης: Ναταλί Γιαξή
Εκτύπωση: Theopress Ltd

Τυπώθηκε σε 250 αντίτυπα
Συμβολικό αντίτιμο 3 ευρώ

Ευχαριστίες στην Μαρκέλα Χατζηδά, Ελένη Κάνθου,
Μαρίνα Στεφανίδου και Πάνο Στεφανίδη.

Ιδιαίτερες ευχαριστίες στη Δήμητρα Ιγνατίου, Άννα Μαρία Χαραλάμπους και το Ίδρυμα Λευτέρη Οικονόμου.

